

POWERPLAN USER GUIDE

LOGGING IN



Copyright © 2020 PowerPlan, Inc. All rights reserved.

CONFIDENTIAL AND PROPRIETARY.

The contents of this material are confidential and proprietary to PowerPlan, Inc. Unauthorized use, disclosure, or reproduction is strictly prohibited.



Login Guide to PowerPlan Remote Application
Last Revised April 14, 2020

PowerPlan, Inc.
300 Galleria Parkway
Suite 2100
Atlanta, GA 30339

Copyright © 2020 PowerPlan, Inc. All rights reserved.

CONFIDENTIAL AND PROPRIETARY.

The contents of this material are confidential and proprietary to PowerPlan, Inc. Unauthorized use, disclosure, or reproduction is strictly prohibited.

Contents

Section 1: Introduction	3
1.1 Purpose	3
1.2 PowerPlan Access and Credentials	3
1.3 Password Policy	3
Section 2: Sign-In Instructions	3
2.1 Signing in from a browser window	3

Copyright © 2020 PowerPlan, Inc. All rights reserved.

CONFIDENTIAL AND PROPRIETARY.

The contents of this material are confidential and proprietary to PowerPlan, Inc. Unauthorized use, disclosure, or reproduction is strictly prohibited.



Section 1: Introduction

1.1 Purpose

The purpose of this guide is to provide step-by-step instructions to help users sign in to the PowerPlan Cloud hosted application.

1.2 PowerPlan Access and Credentials

Every PowerPlan SAML client will setup a PowerPlan SSO (Single Sign On) application on their corporate identity provider. Once authenticated, the client will be redirected to the application console with the ability to access the PowerPlan applications.

1.3 Password Policy

When using SAML the Password Policy used will be the client's corporate policy.

Section 2: Sign-In Instructions

2.1 Signing in from a browser window

1. Open any browser.
2. Type your corporate access URL into the address bar and hit Enter.
3. Enter your corporate login credentials and sign in.
4. You will be redirected to the application console.

Copyright © 2020 PowerPlan, Inc. All rights reserved.

CONFIDENTIAL AND PROPRIETARY.

The contents of this material are confidential and proprietary to PowerPlan, Inc. Unauthorized use, disclosure, or reproduction is strictly prohibited.



Choose your app to get started



PowerPlan Dev

PowerPlan Applications

© Powered by Amazon AppStream 2.0



5. Once signed in, you will be able to select the PowerPlan application you want to run.
6. Click the icon for the application you want to launch.
7. Your session and application settings will begin to load.



Reserving your session...

Copyright © 2020 PowerPlan, Inc. All rights reserved.

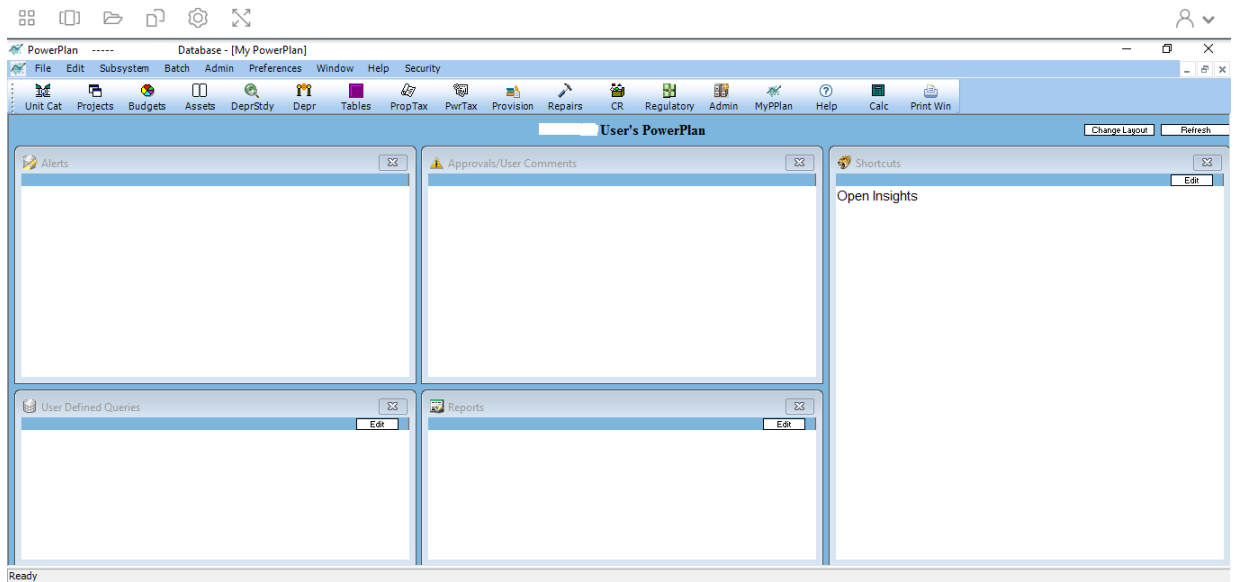
CONFIDENTIAL AND PROPRIETARY.

The contents of this material are confidential and proprietary to PowerPlan, Inc. Unauthorized use, disclosure, or reproduction is strictly prohibited.



Loading application settings..

8. Your PowerPlan application will open.



Copyright © 2020 PowerPlan, Inc. All rights reserved.

CONFIDENTIAL AND PROPRIETARY.

The contents of this material are confidential and proprietary to PowerPlan, Inc. Unauthorized use, disclosure, or reproduction is strictly prohibited.